

Sapphire Rods & Ruby Rods - SP-27

Specifications

Model	SP-27
Outside Diameter	.0622/.0628"
Length	.430/.448"
Material	Unpolished/Sapphire Rods

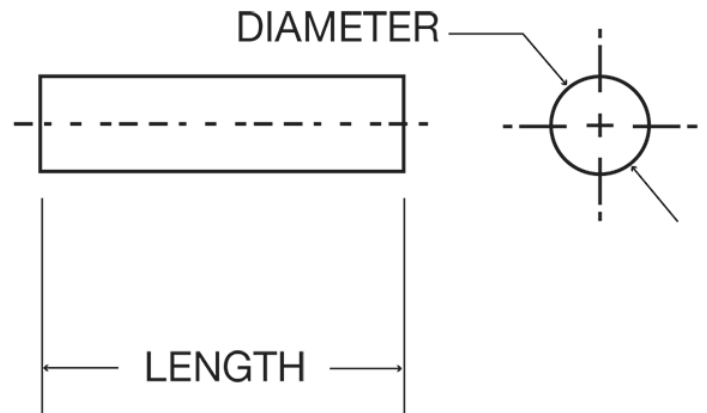


Description

Sapphire Rods are used in a wide range of applications. A sapphire rod can be made with all surfaces polished for optical and wear applications or with all surfaces fine grind (un-polished) to serve as an insulator. Sapphire Rods are available in a range of outer diameter and lengths. OD's as small as .0175".

Typical Applications

- Pumps
- Light Pipes
- Spacers
- Insulators
- Wear Applications



NOT SEEING EXACTLY WHAT YOU NEED?

We specialize in creating a wide range of custom optical components and custom mechanical components including a variety of shapes - from internal holes and tapers to outer flanges, angles and surface finishes. Contact us and we will consult with you to create a custom component that meets all of your specifications.